

2J6615B-868

(Datasheet)

Type	ISM antenna
Frequencies	ISM (868-875 MHz)
Mounting	Body Mount
Revision	00



1. SPECIFICATION

1.1. Electrical Specifications

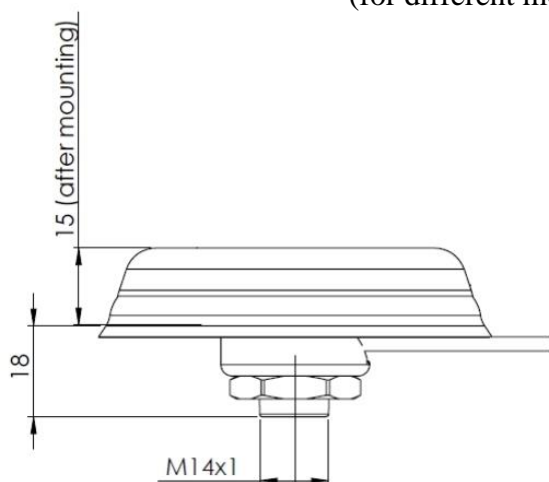
Frequencies	ISM (868-875 MHz)
Impedance	50 Ohms
Polarization	Vertical
Gain	2 dBi
VSWR	<2:1
Operating temperature	-40°C to +85°C
IP/IK ratings	IP67, IP69K

1.2. Connection Specifications

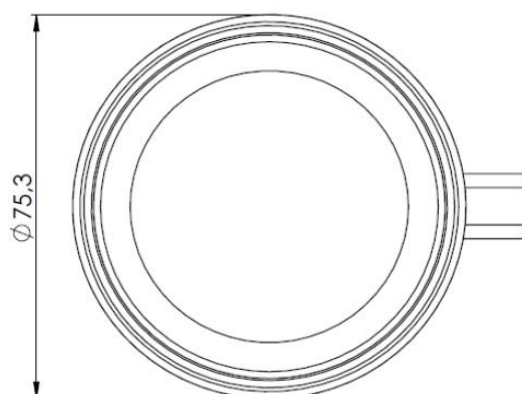
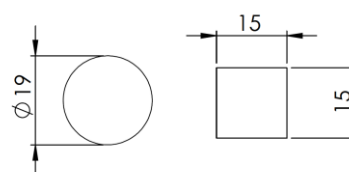
Connector type: SMA male
 Cable: RG174
 Cable length: upon request

1.3. Mechanical Specifications and Dimensions

Material: Lid: ABS / Base: Zamak / Gasket: TPE
 Dimensions: 77.4mm x 15mm (dimensions after mounting)
 Weight: 140 g (counted with 2m cable RG316)
 Colour: Black (for different colours please ask our sales team)
 Mounting: Automotive Nut M14x1
 (for different mounting options please ask our sales team)



Mounting holes



2. MEASUREMENT

- Tested with 30cm cable length on 30 cm x 30 cm metallic ground plane.

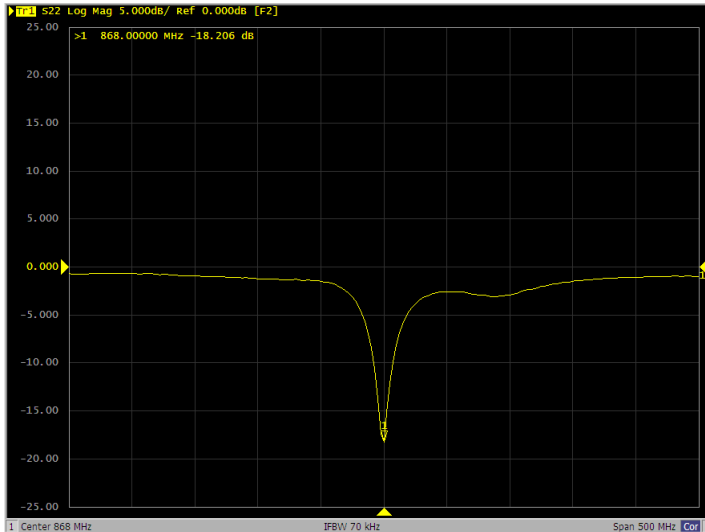


Figure 1 - S11 (Log Mag)

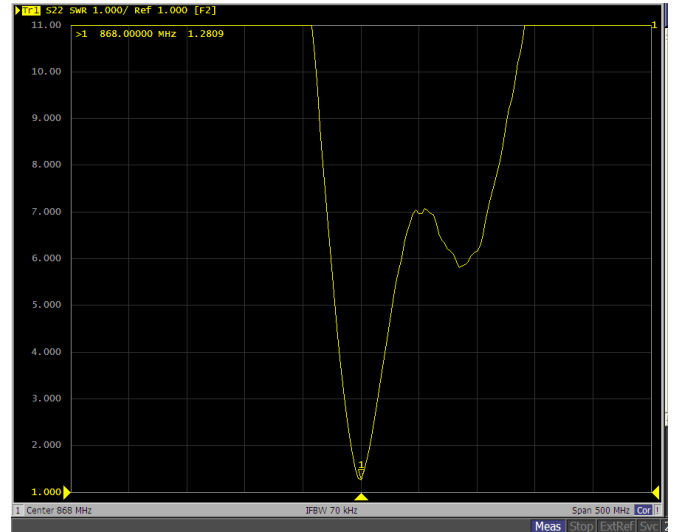


Figure 2 - S11 (VSWR)

Freq = 0.8705GHz Az= 45 EL= 45

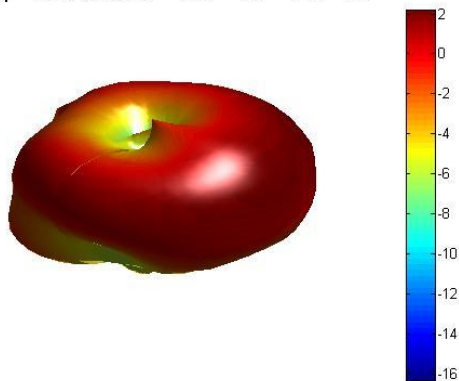


Figure 3 - Antenna 3D radiation pattern (dBi)

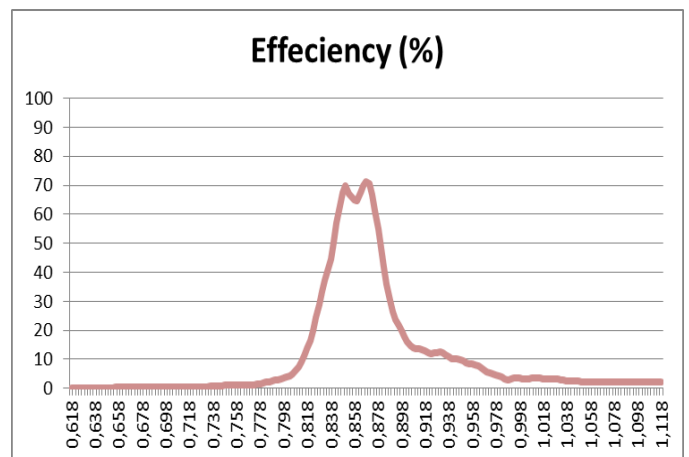


Figure 4 - Antenna efficiency (%)

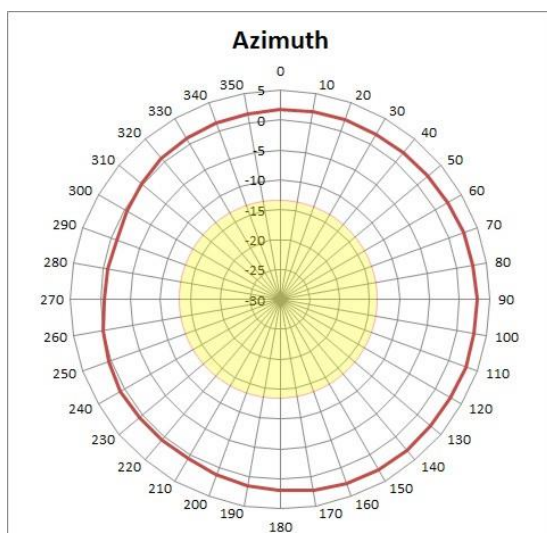


Figure 5 - Azimuth

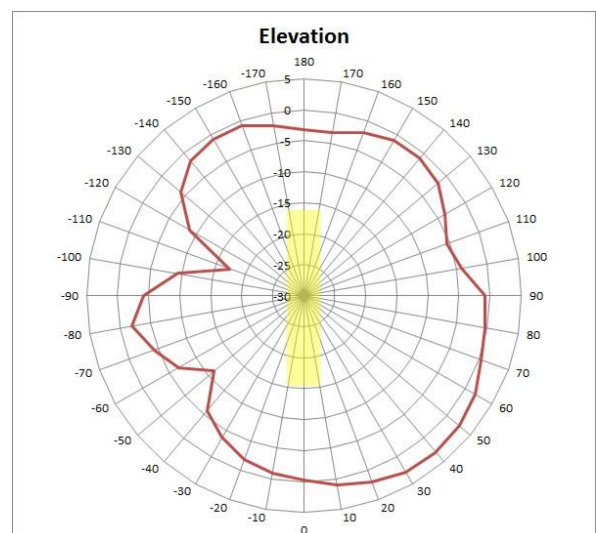


Figure 6 - Elevation

3. IMAGES

